

MERIDIAN MODELS MPM24

40, MORELAND AVENUE

BENFLEET, ESSEX, SS7 4HB

E-mail; - meridianmodels.rosa@talk21.com

WATER TANK WAGON 'RECTANK'

This tank wagon is closely based on a World War 1 light railways 'field conversion. The unstable nature of the ground on which some of the forward area supply lines were constructed, either by water-logged subsoil or by shell fire (or both!), caused some of the steam locomotives to roll alarmingly. In particular the American built Baldwin and Alco six-coupled side had a high center of gravity were known to capsize entirely. The water in the side tanks flowing from one tank to the other via the balance pipe was seen to be the cause and in an attempt to combat this some locos had their tanks removed and placed on flat wagons to act as water tenders. As yet no complete photograph has been seen to show these in service although glimpses may be seen in the background of some 'photos. Ref. Narrow Gauge at War, Plateway Press. This kit can be used to simulate this role or used as a general-purpose tank wagon.

BUILDING NOTES

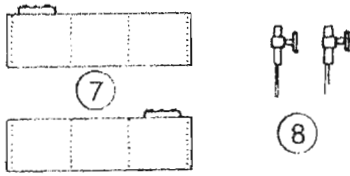
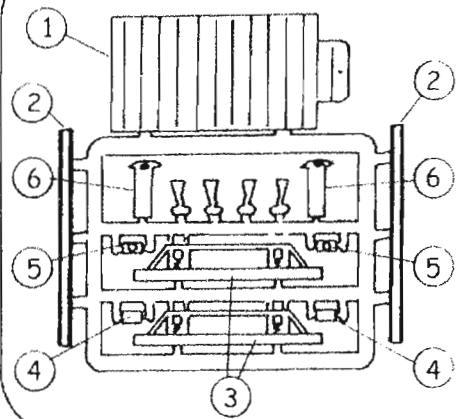
The 'exploded' diagrams show in detail the recommended stages and method of assembly but the following may be noted. Remove all parts from the 'sprues' as and when they are required. Cut carefully but do not break them off! Clean off any remaining moulding 'pips' or flash with fine wet and dry paper. Use fluid cements e.g. MEK-PAK for the assembly of the plastic parts, and super-glue (Zap a Gap) for the metal parts. Study the diagrams and pre-drill holes as required. We would recommend the building of the tank body and the underframe as two separate units and to pre-paint them before final assembly. The pair of side tanks have cast detail on the inside faces at the tank filler ends which will need to be carefully removed to allow the tanks to be affixed together.

Please note that apart from mouldings to accept BEMO loops couplings are not supplied. We strongly suggest the fitting of the Greenwich Coupling system of automatic narrow gauge couplings. These are magnetically operated and are compatible with existing 009 couplings. Further details can be obtained by writing to Greenwich & District Narrow Gauge Railway Society, 13, Rawlins Close, Addington, Croydon, Surrey, CR2 8JS or at www.gdngrs.com/products

PAINTING NOTES

Carefully wash the sub-assemblies to remove grease and residue and prime, we recommend Halfords grey acrylic car primer. The livery of your choice may be applied. We did ours in overall black, dark grey would be an alternative, with natural wood planking on the timber floor. Weathering by dry brushing to taste brings out the detail by using a lighter shade.

We highly advise the use of an air-brush for painting, even the most basic of which will give a much better finish than hand brushing and will avoid that 'just dipped in a tin' look. Thinly airbrushed coats of acrylic paint will also not obscure the fine surface detail on castings.



Also:
 six handrail knobs
 one length 0.45mm brass wire
 one length 1mm brass strip
 one pair wheelsets

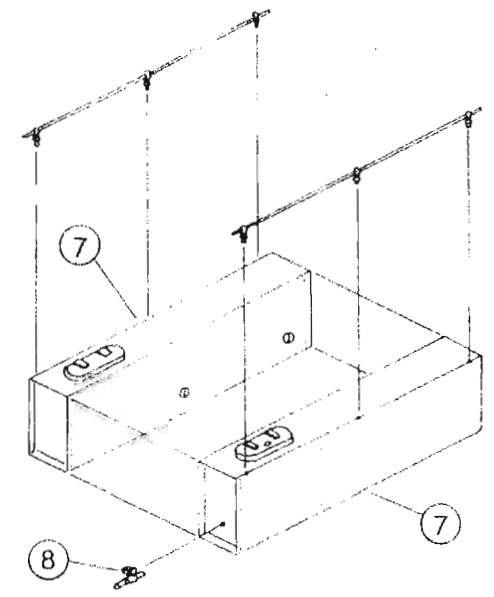
The tanks are best fixed together on a flat surface.

The locations for the handrail knobs are marked on the top edge of the tank.

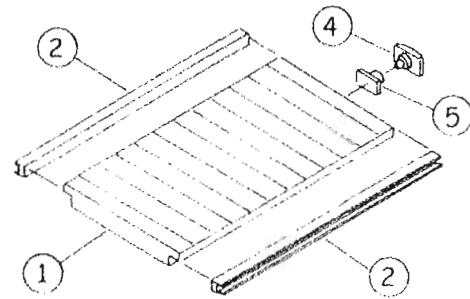
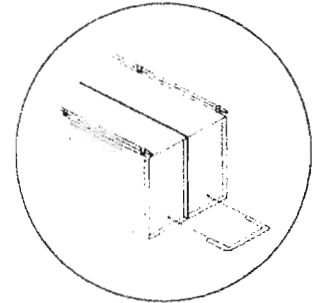
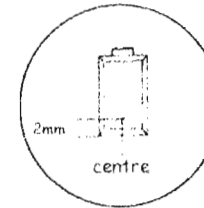
Drill vertically 0.75mm and fit the knobs.

Cut two lengths of 0.45mm wire each 35mm long and thread through the handrail knobs to form the rails.

Two taps are supplied in the kit, fit one or both according to your preference. Drill 0.75mm as shown in the diagram below and fit

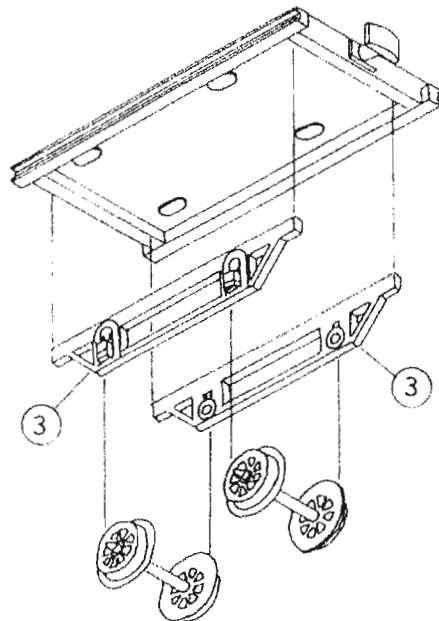
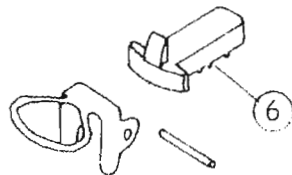


A balance pipe between the two tanks may be fitted. Drill 1mm and fit a pipe from 1mm brass wire (not supplied) as shown in the diagram.



This kit builds an unbraked wagon. Carefully remove the brake platform from the floor moulding before starting construction. The brake shoe mouldings are also not required.

Couplings:
 Parts 4 & 5 can be used to provide dummy buffer couplings. Alternatively, part 6, plus BEMO coupling loops (not supplied) can be used. We recommend, however, the use of the Greenwich Coupling



Cut the 1mm brass strip into two pieces, each 40mm long. Thread between the tanks and the handrails and fix to the edge of the wagon floor, approximately 8mm from the ends of the tanks.

