

PENRHYN QUARRY RAILWAY 'FULLERSITE' DROPSIDE WAGON

The Penrhyn Railway (1879-1962) carried quarry output from Bethesda to Porth Penrhyn. After the First World War a by-product of slate quarrying was developed in finely graded slate powder, given the trade name 'Fullersite', this was used as a filler for such things as road asphalt mixed with bitumen. The bagged product was conveyed from the quarry in a fleet of 4 wheeled wagons designed specifically. A total of approximately 90 wagons of 2 types were built in small batches of 20 or so at a time - lift out sides, with heavy timber staunchions and dropside. Our kit is of a wagon in the last batch, no. 85, with iron floor and ends and 2 plank drop-sides. A similar wagon may be viewed at Penrhyn Castle Museum.

BUILDING NOTES

The exploded diagram (overleaf) shows the assembly in detail, but the following note may be useful. Remove parts from 'sprue' carefully. Assemble one end and one side, having dry fit first to check. Fit second end, ensure squareness of ends to each other. Dry fit second side and fix, trapping wheel sets in the process.

layout. 009 type coupling mouldings are supplied to fit 'Bemo' loops (not supplied), epoxy resin brass wire to locating pins and trim to length. Fluid cement (Mek Pak) is recommended for the assembly of this kit.,

PAINTING NOTES

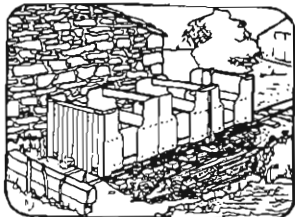
Ex Works:- * Natural Wood - sides, underframe, headstocks and 'buffing' strake
Black - Floor, ends, axleboxes, strapping and front face of 'buffing' strake

* Natural Wood Paint with pale cream or light oak and weather to taste with thin wash coats of light grey, in service these wagons presented an overall dusty appearance.

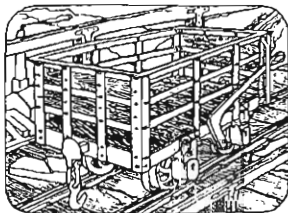
THE PENRHYN COLLECTION

Other kits in this series are:

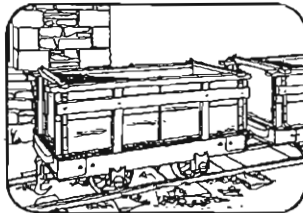
MPM 3	Penrhyn Workmens Open (3 vehicles)
MPM 3/1	" " (1 vehicle)
MPM 4	Quarry Flat or Chassis (1 vehicle)
MPM 5	Penrhyn 'De Winton' slate wagon (1 vehicle)
MPM 6	" " (5 vehicles)
MPM 9	Penrhyn Wooden Coal Wagon (1 vehicle)
MPM .10	" " " " (5 vehicles)



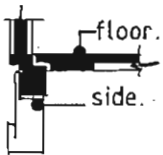
MPM 3



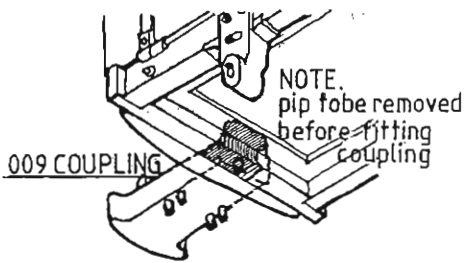
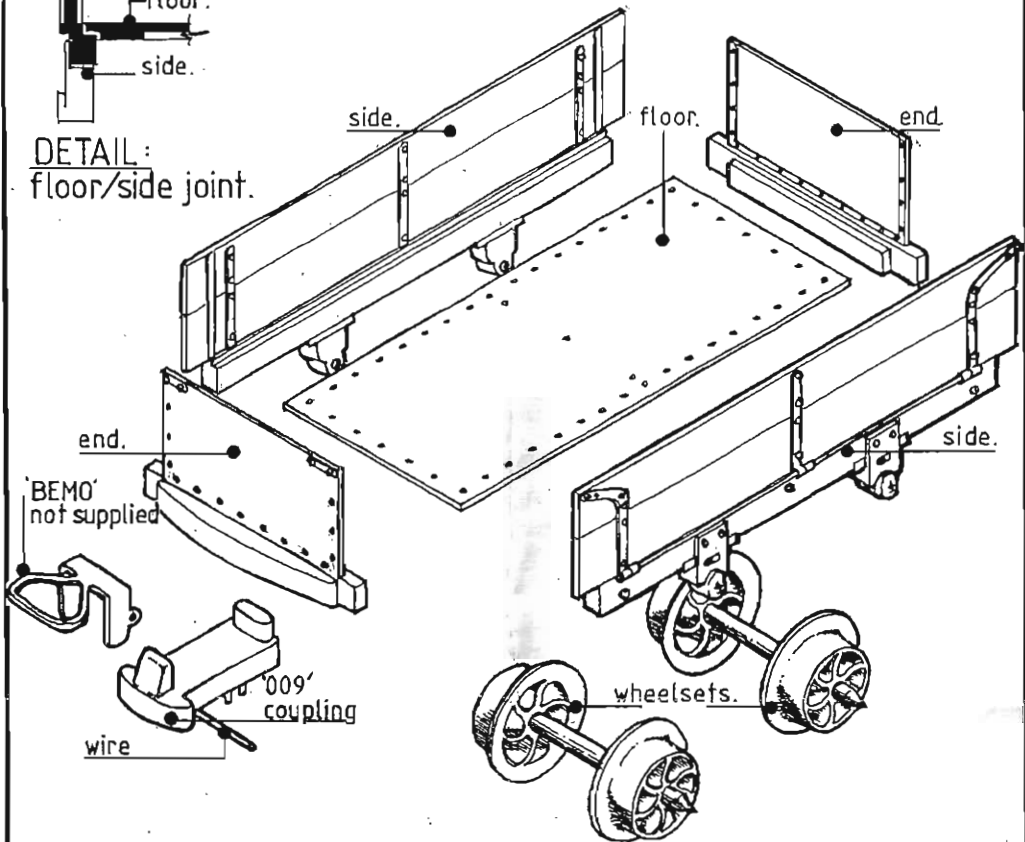
MPM 5



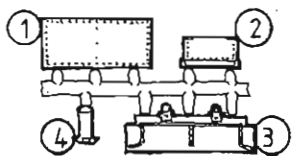
MPM 9



DETAIL:
floor/side joint.



PARTS [2 sprigs per wagon]



- 1 floor
- 2 end
- 3 side
- 4 009 coupling